



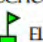

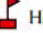


LEGEND

-  REVIEW LIMITS
-  FIRE STATION
-  HOSPITALS
-  LIBRARY
- SCHOOL LOCATIONS**
-  ELEMENTARY SCHOOL
-  MIDDLE SCHOOL
-  HIGH SCHOOL

VICINITY MAP



S: 20 T: 30 R: 18

NOTES:
 CLEARVIEW LAND DESIGN, OR HILLSBOROUGH COUNTY MAKE NO WARRANTY, REPRESENTATION OR CLARITY AS TO THE CONTENT, SEQUENCE, ACCURACY, TIMELINESS, OR COMPLETENESS OF ANY OF THE GEODATA INFORMATION PROVIDED HEREIN.

SERVICE LAYER CREDITS: SOURCES: ESRI, HERE, DELORME, USGS, INTERMAP, INCREMENT P CORP., NRCAN, ESRI JAPAN, METI, ESRI CHINA (HONG KONG), ESRI

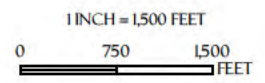


FIGURE: VICINITY MAP

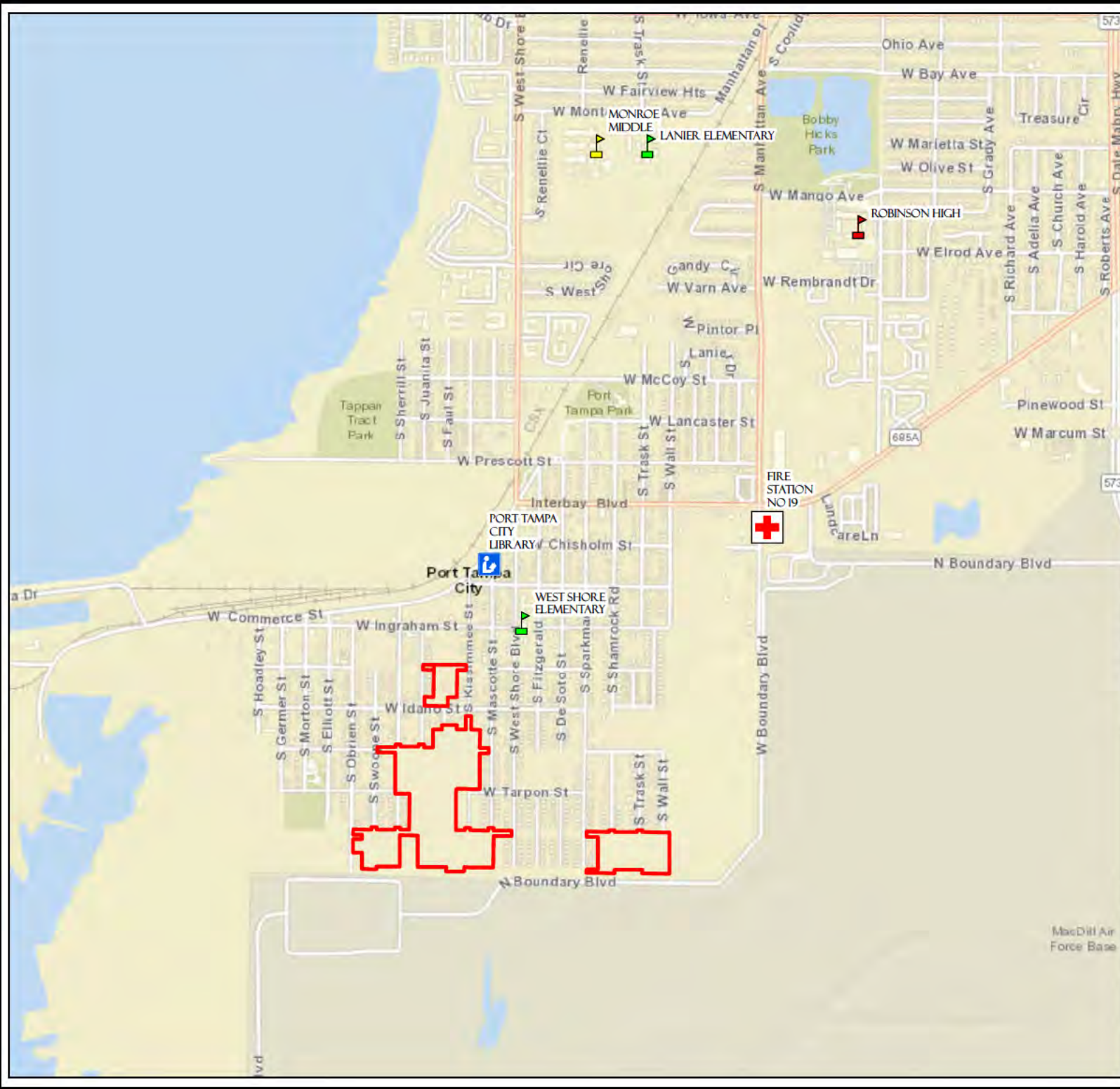
PROJECT: HURLEY PROPERTY

HILLSBOROUGH COUNTY

FILENAME:
 HUR_VICINITY_20170615_85XIL_WCS

MAP DATE:
 6/15/2017

MAP PREPARED BY:
 CORY SWALES



LEGEND
 — REVIEW LIMITS



S: 20 T: 30 R: 18

NOTES:
 CLEARVIEW LAND DESIGN, OR USGS MAKE NO WARRANTY, REPRESENTATION OR GUARANTY AS TO THE CONTENT, SEQUENCE, ACCURACY, TIMELINESS, OR COMPLETENESS OF ANY OF THE GEODATA INFORMATION PROVIDED HEREIN.
 SERVICE LAYER CREDITS: SOURCES: ESRI, HERE, DELORME, USGS, INTERMAP, INCREMENT P CORP., NRCAN, ESRI JAPAN, METI, ESRI CHINA (HONG KONG), ESRI (THAILAND), TOMTOM, MAPMYINDIA, © OPENSTREETMAP CONTRIBUTORS, AND THE GIS USER COMMUNITY

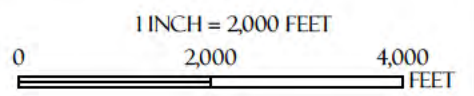


FIGURE: USGS QUAD

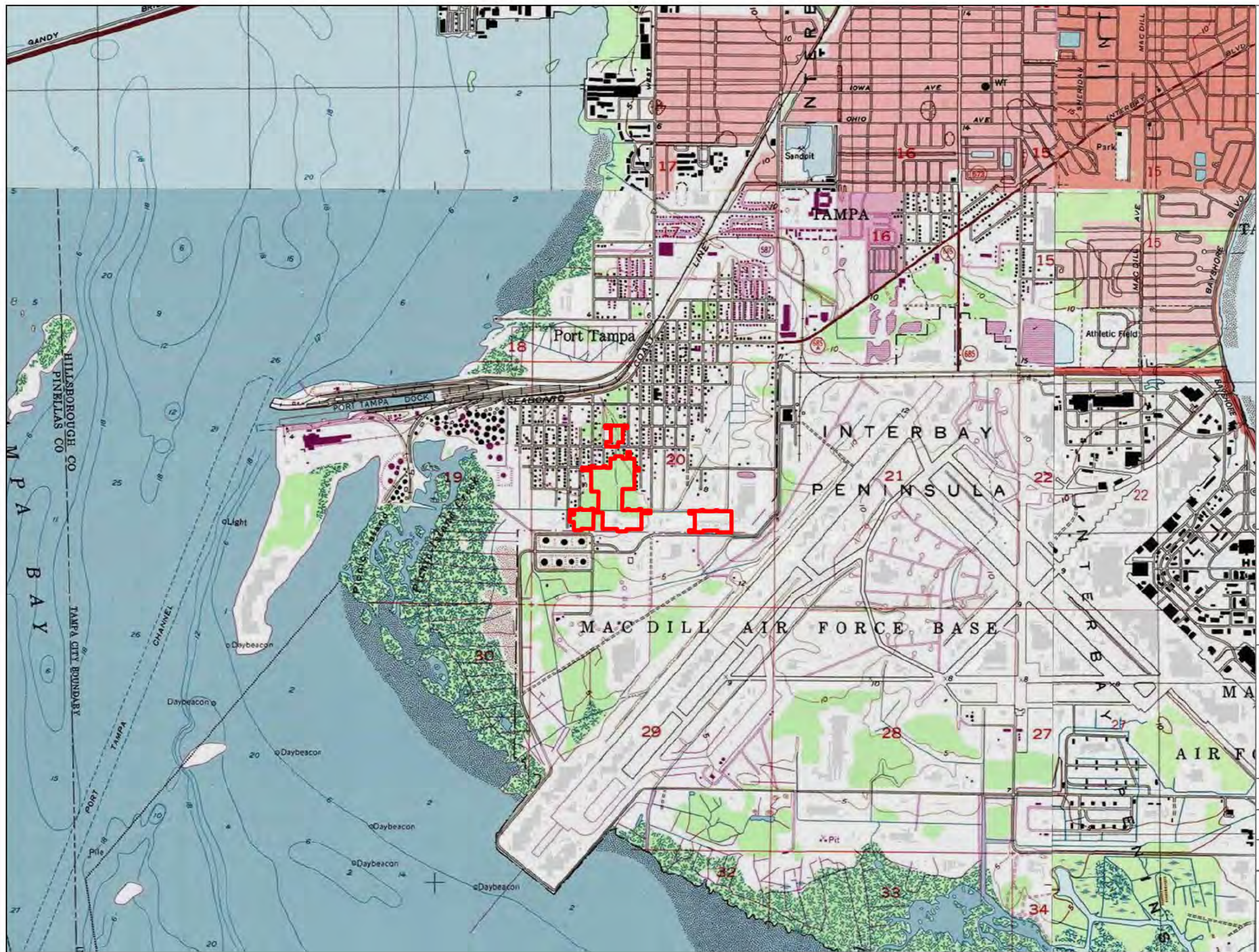
PROJECT: HURLEY PROPERTY

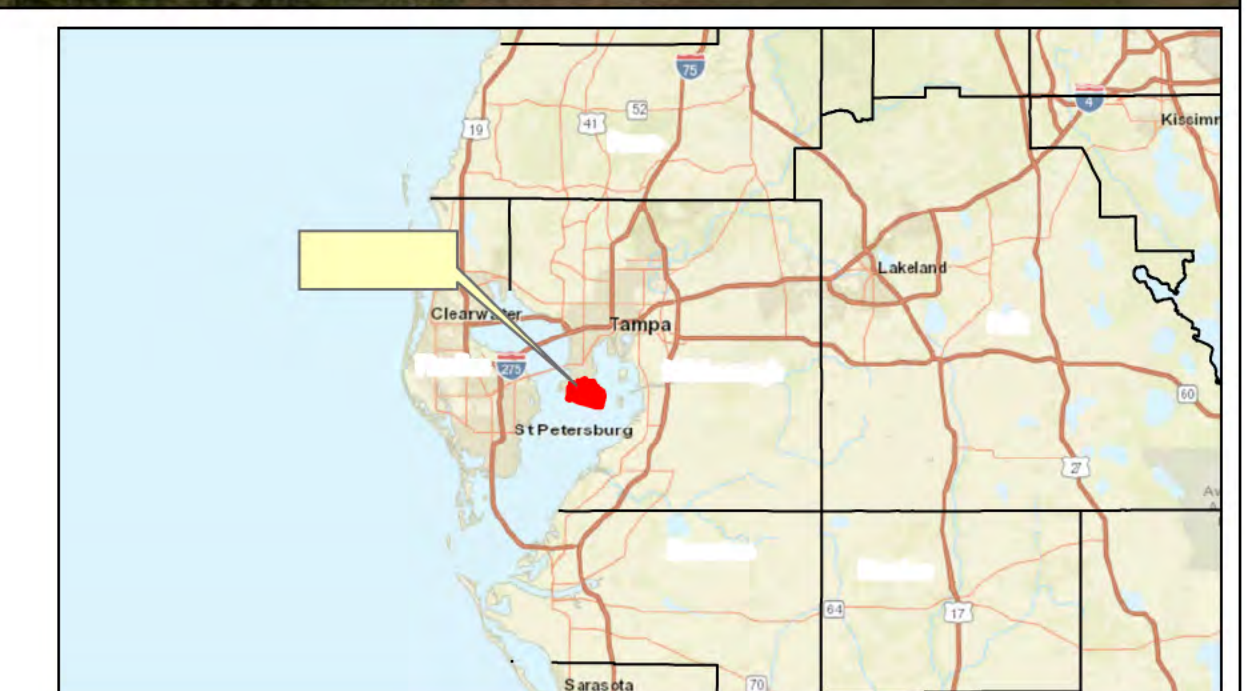
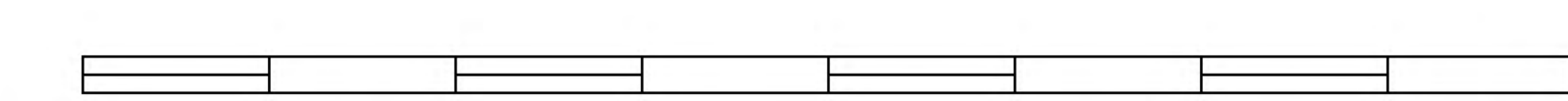
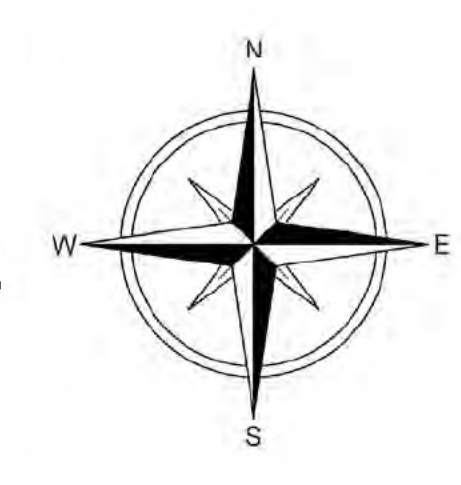
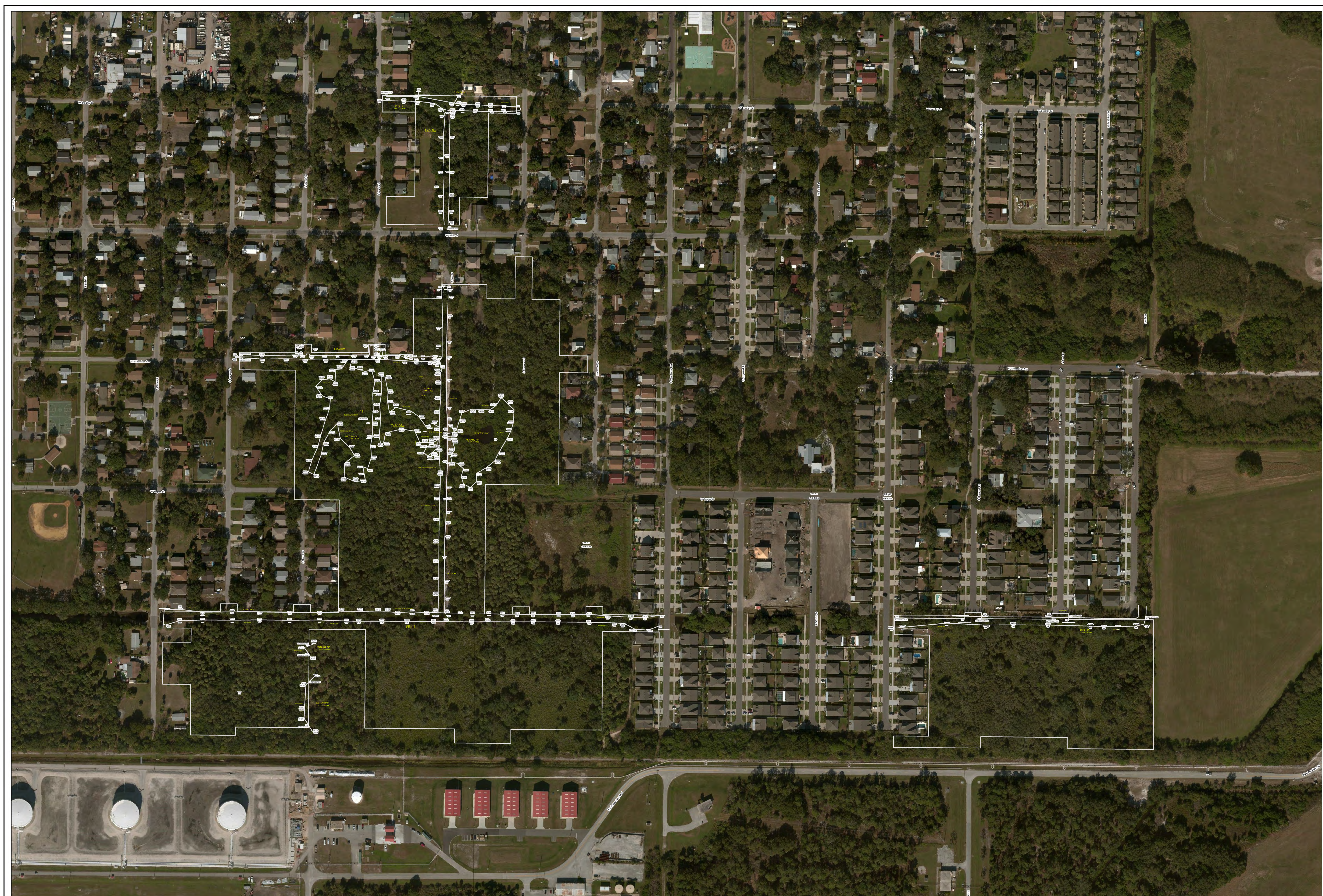
HILLSBOROUGH COUNTY

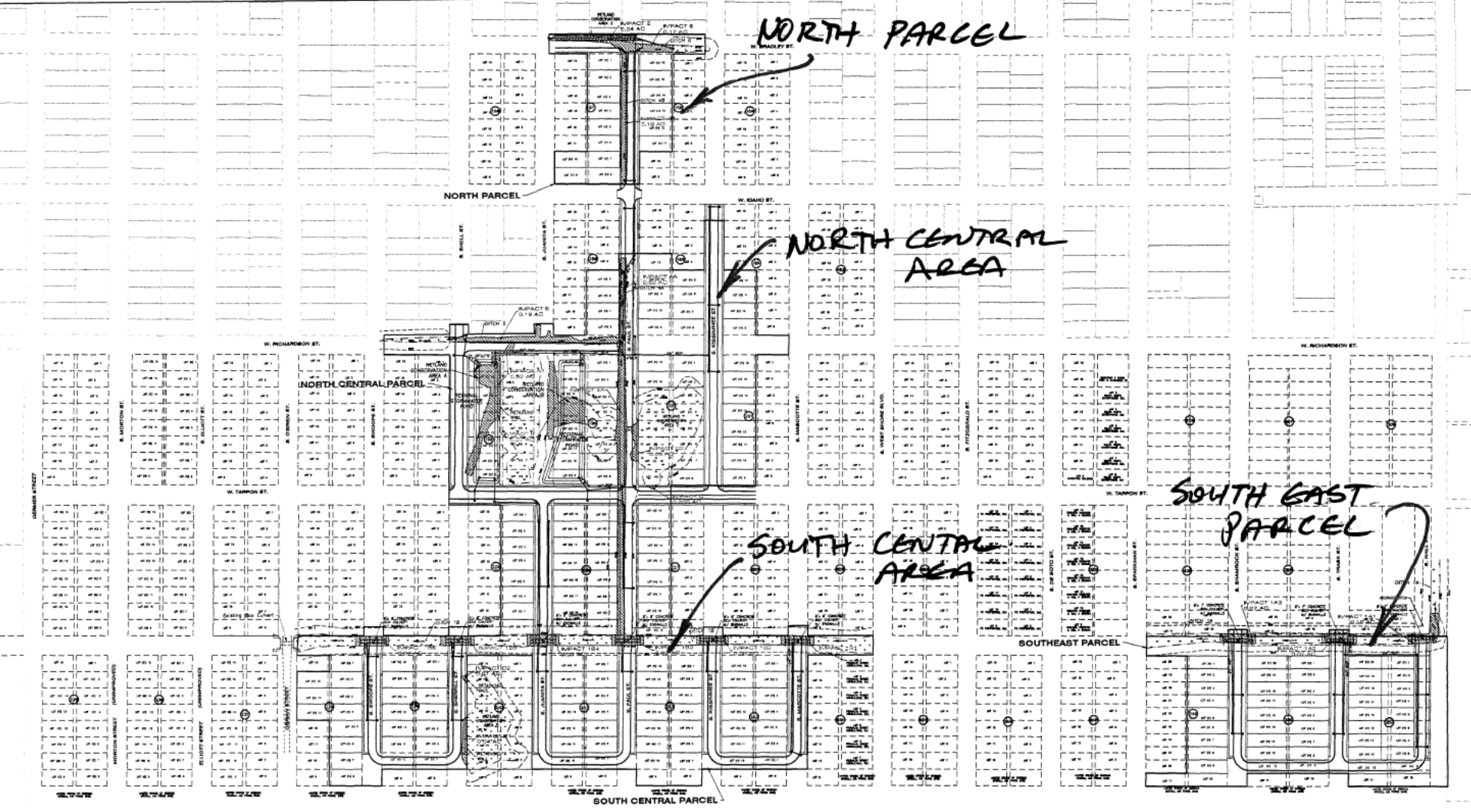
FILENAME:
 HUR_QUAD_20170615_JIX17_WCS

MAP DATE:
 6/15/2017

MAP PREPARED BY:
 CORY SWALES







Overall Wetland/Ditch Summary

Wetland and Ditch ID	Size (ac) Inside Review	Serial Type*
Wetland A	1.32	611
Wetland B	4.45	612
Wetland C	0.95	613
Wetland D	0.85	617
Wetland E	0.94	623
Ditch 1A	0.64	612D
Ditch 1B	3.24	612D
Ditch 1C	0.80	612D
Ditch 1D	0.13	612D
Ditch 5	0.24	612D
Ditch 6	0.23	612D
Total	16.41	

* 611= Mangrove swamps;
 612=Ditch with mangroves;
 613=Marsh wetland (water/soil);
 617=Marsh wetland;
 623=Other Areas;
 612D=Ditch without mangroves

Wetland/Ditch Impact Summary Table for Hurley Lots

Ditch or Wetland ID	Impact Size (ac)
1A1	0.100
1A2	0.070
1A3	0.070
1B1	0.060
1B2	0.040
1B3	0.060
1B4	0.070
1B5	0.070
1B6	0.070
1A4	0.060
4B	0.100
5	0.130
6	0.170
8	0.270
C1	0.005
C2	0.490
D1	0.040
D2	0.010
E	0.040
Total	2.515



LEGEND

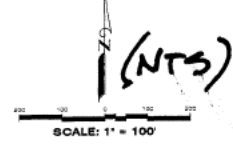
PROPOSED WETLAND AND DITCH IMPACT

25' WETLAND CONSERVATION AREA SETBACK LINE

US ARMY CORPS OF ENGINEERS WETLAND LINE

LOT AND BLOCK DESIGNATIONS FOR (C) CITY-OWNED OR (H) FOR LENNAR-HURLEY LOTS

IMPACT ID and ACRES



(OVERALL)

HURLEY LOTS
COE MASTER WETLAND IMPACT PLAN
 CITY OF TAMPA, HILLSBOROUGH COUNTY, FLORIDA

PREPARED FOR:
LENNAR HOMES LLC
 4600 West Cypress Street, Suite 200
 Tampa, Florida 33607
 Phone: (813) 574-5553

CONING PERMIT # _____
 Drawing Scale of North Arrow Vertical Datum: 1988 (FWS 98)
 Datum: Mean Sea Level (MSL)
 Contour Interval: 5' (unless otherwise noted)

DESIGNED BY: [blank] DATE: [blank]
 CHECKED BY: [blank] DATE: [blank]

FOR MORE INFORMATION CONTACT:
CLEARVIEW
 1915 W. Alafia Avenue, Suite 102
 Office: (813) 922-7979 Fax: (813) 922-7975

SHEET 1 OF 1

NORTH PARCEL

W. IDAHO ST.

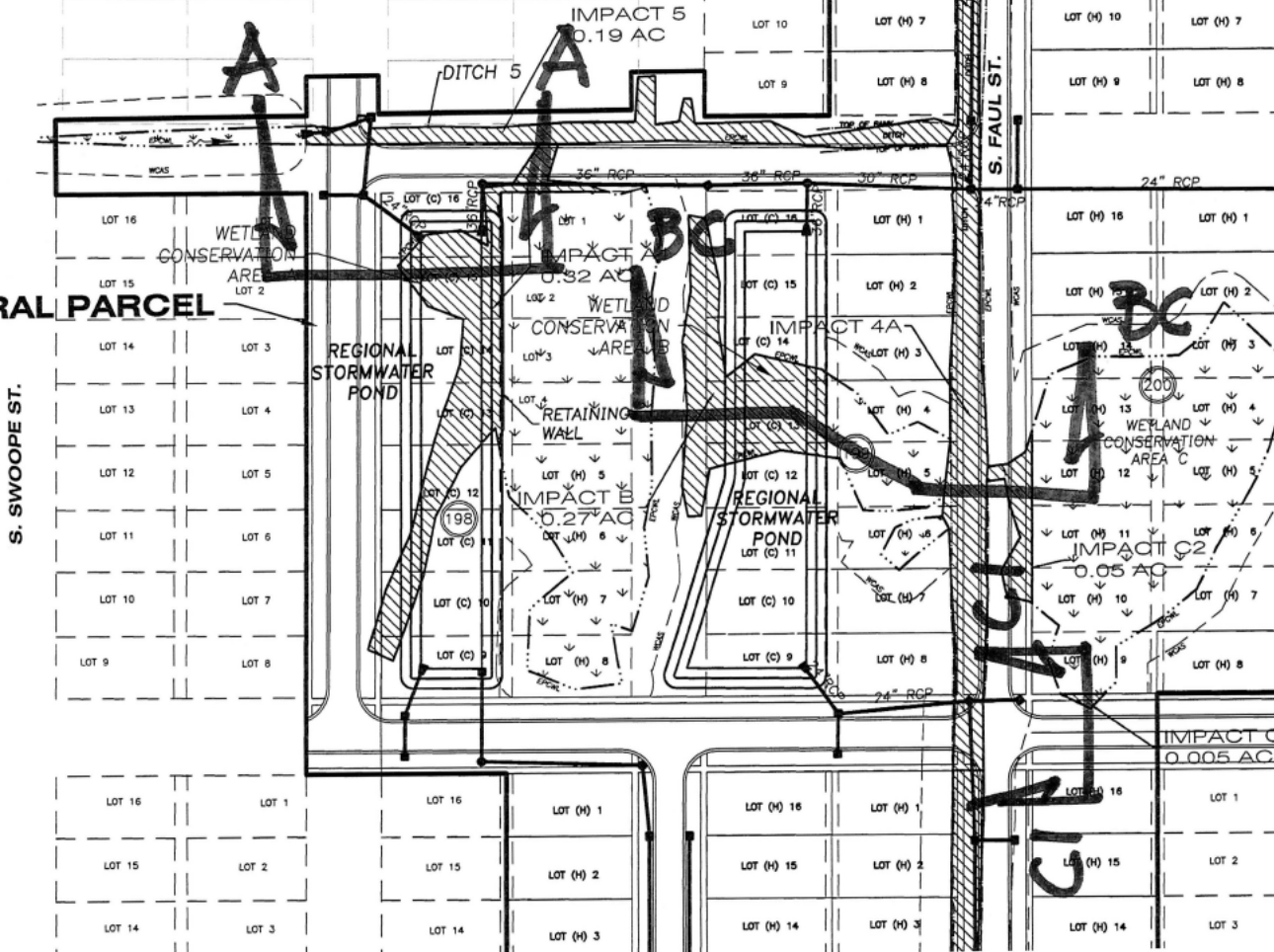
S. SHELL ST.

S. JUANITA ST.

S. FAUL ST.

S. KISSIMMEE ST.

S. MASCOTTE ST.

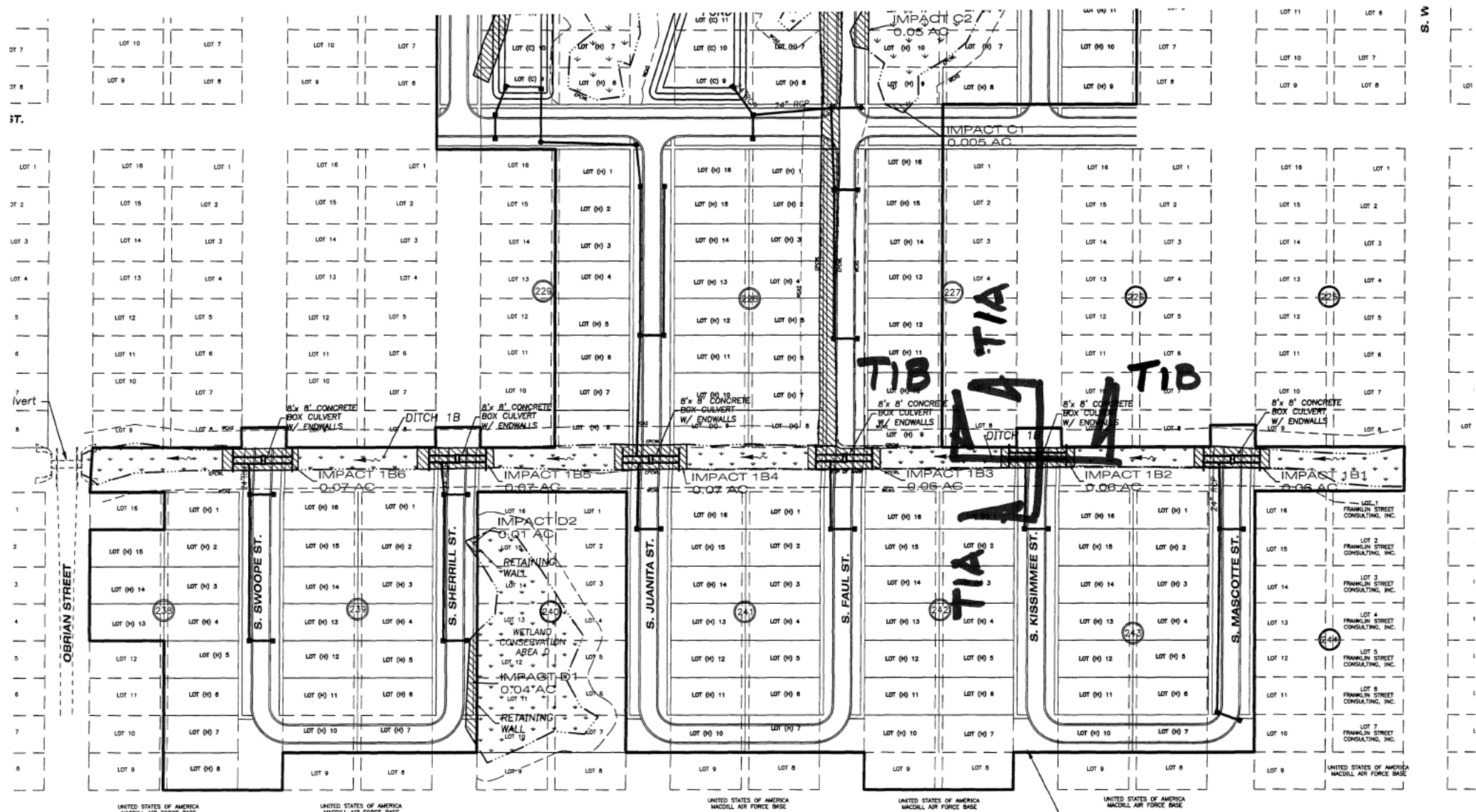


CENTRAL PARCEL

S. SWOOPE ST.

A
N
(NTS)

(NORTH CENTRAL AREA)



Wetland/Ditch
Impact Summary

(SOUTH CENTRAL AREA)

WETLAND
CONSERVATION
AREA E

IMPACT E
0.04 AC

IMPACT 6
0.17 AC

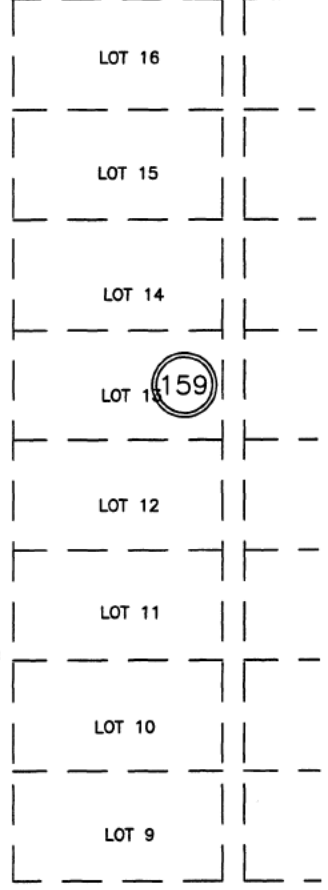
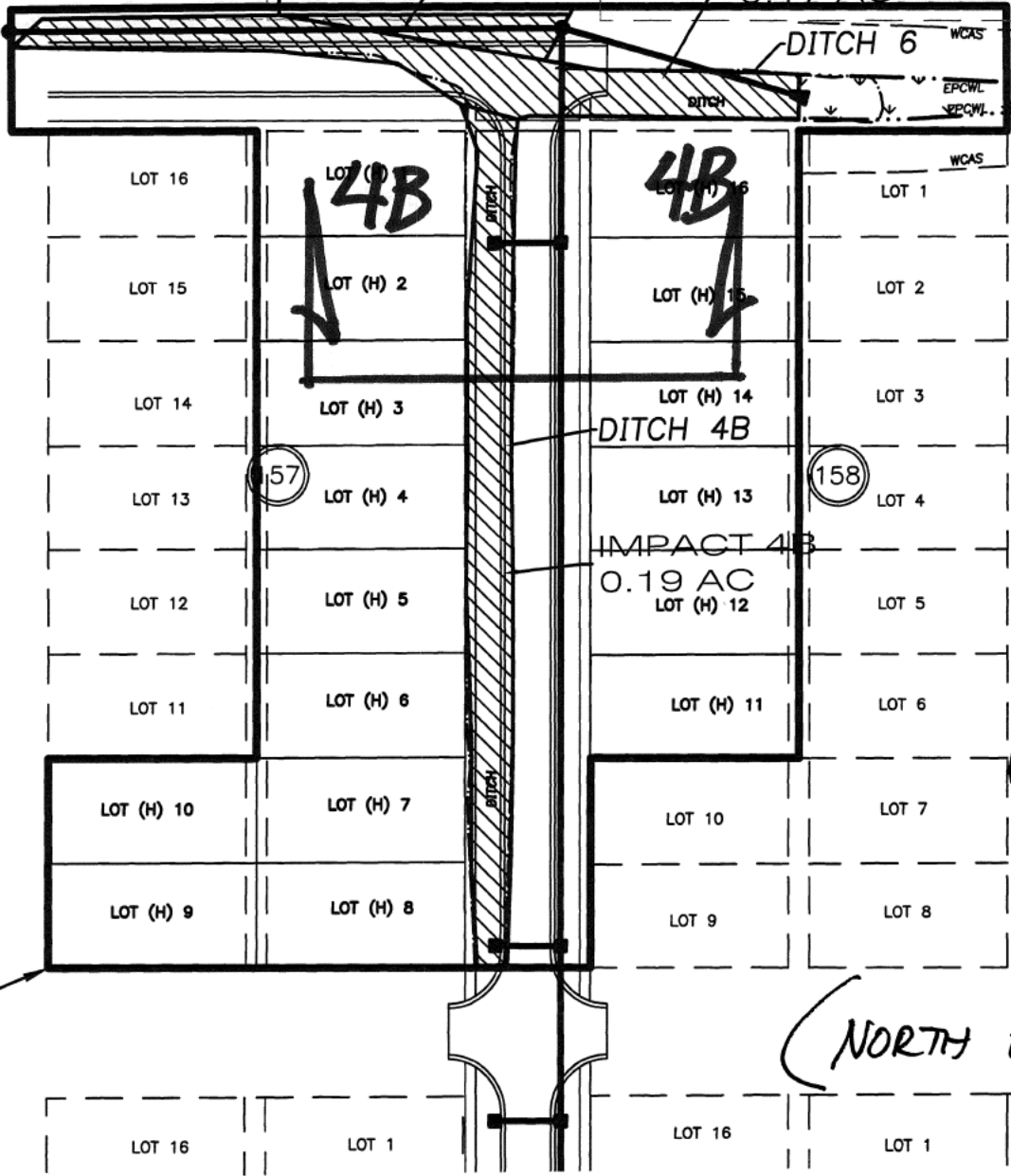
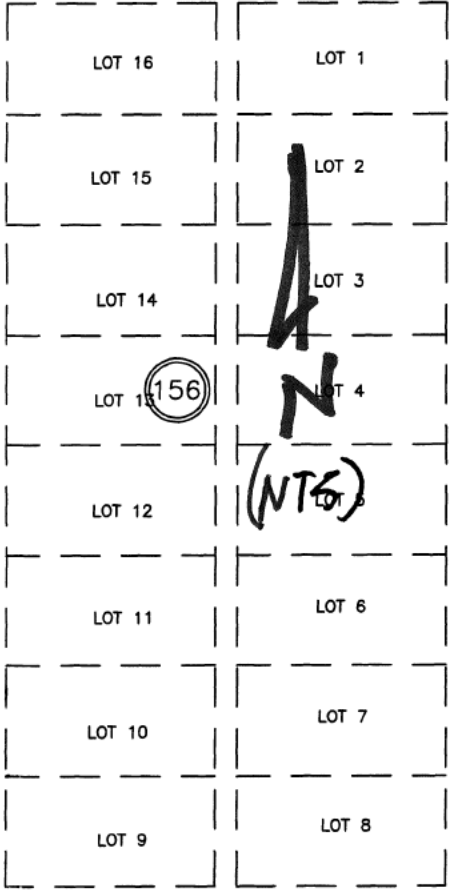
DITCH 6

WCAS

EPCWL

RPCWL

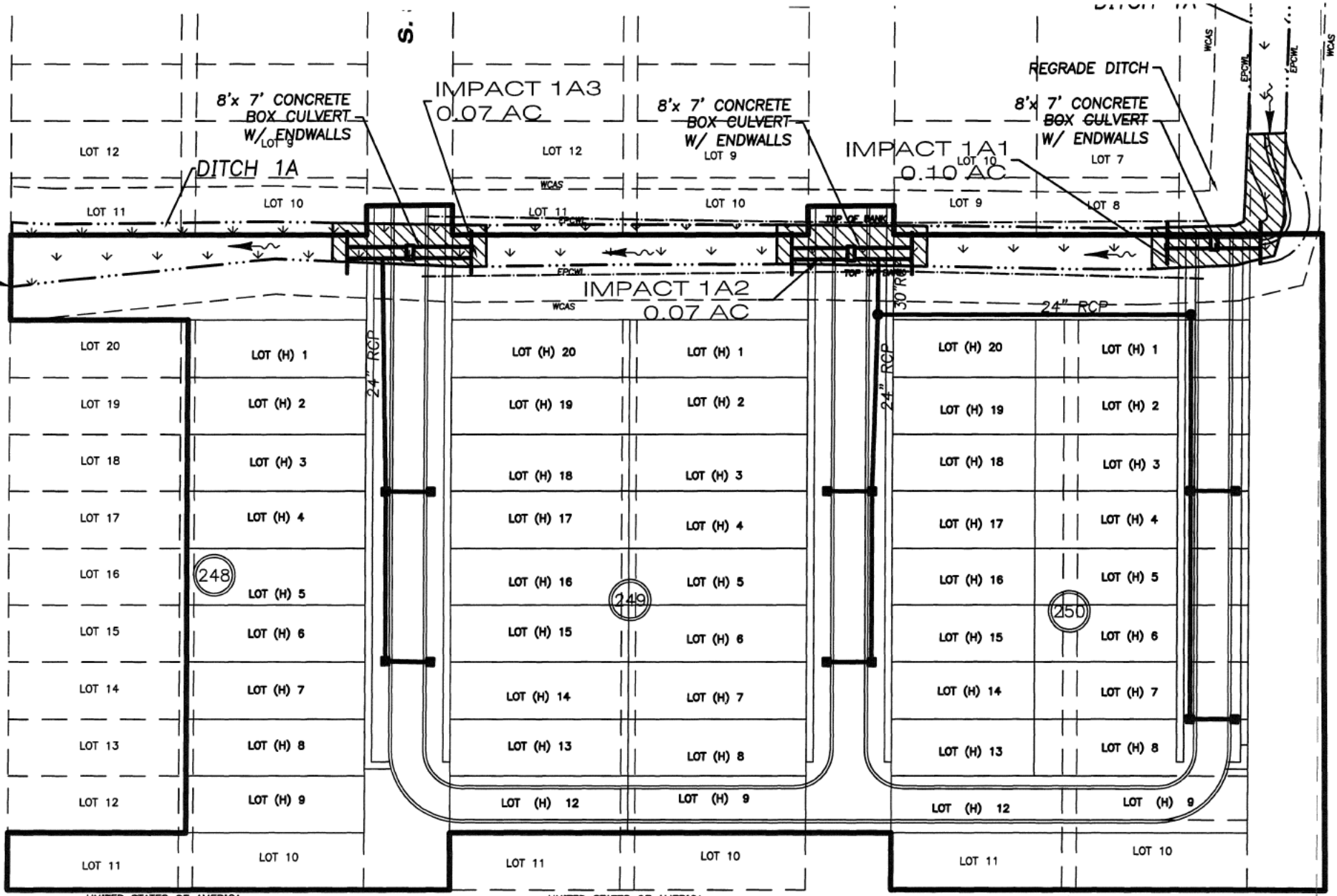
W. BRA



TH PARCEL

(NORTH PARCEL)

W. IDAHO S'

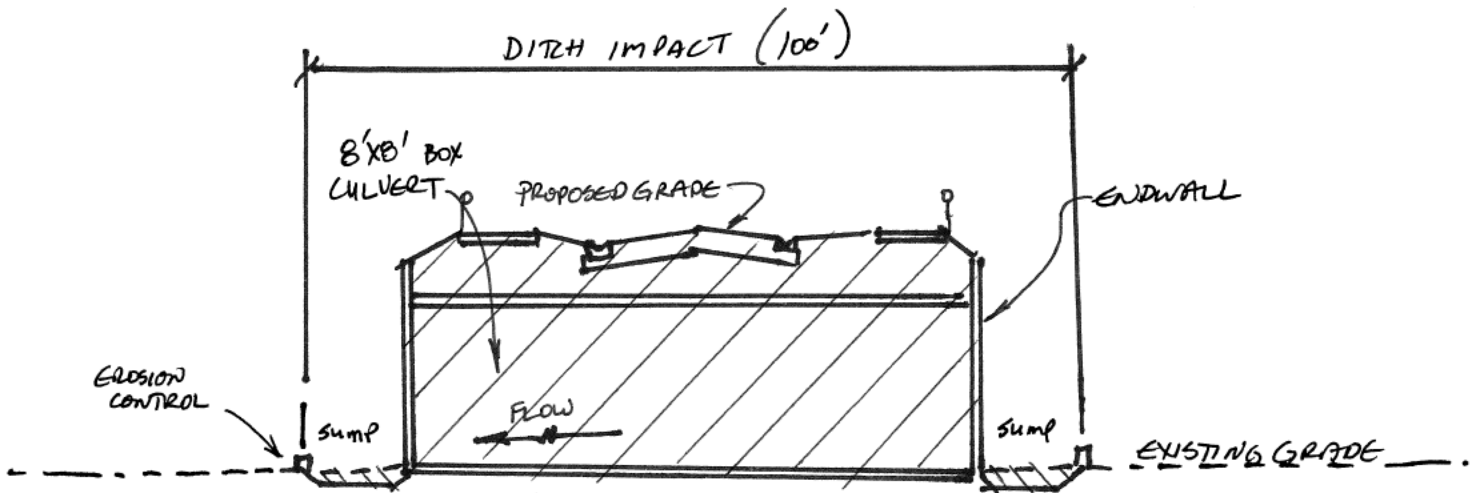


UNITED STATES OF AMERICA
MACDILL AIR FORCE BASE

UNITED STATES OF AMERICA
MACDILL AIR FORCE BASE

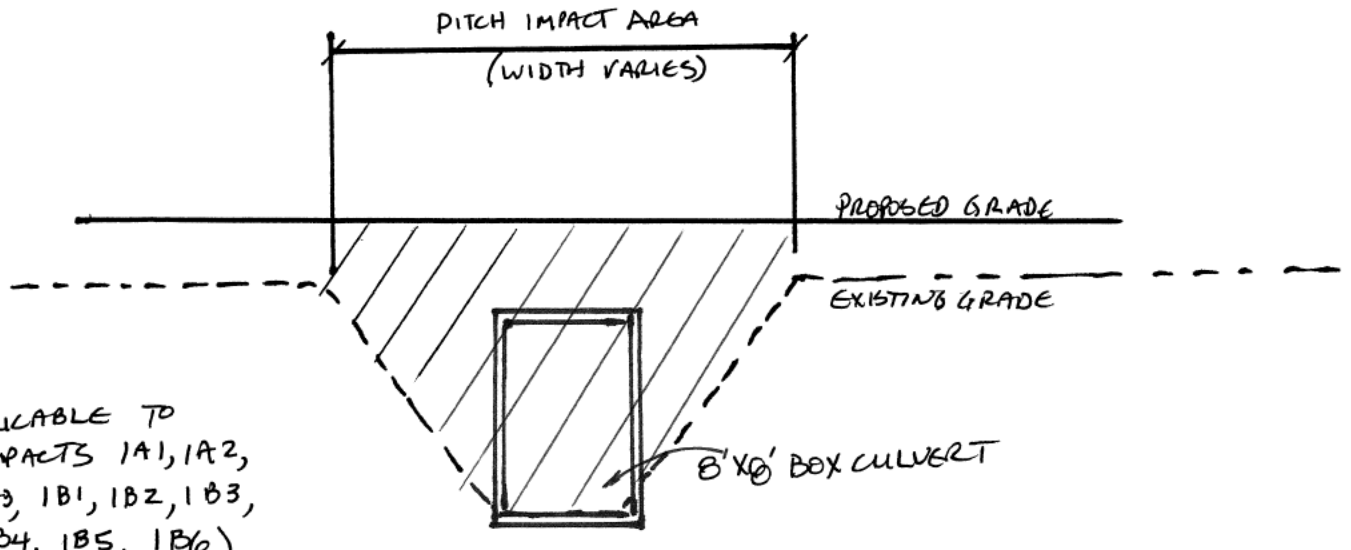
UNITED STATES OF AMERICA
MACDILL AIR FORCE BASE

(SOUTHEAST PARCEL)



TYPICAL DITCH 1 SECTION
FOR ROAD CROSSING

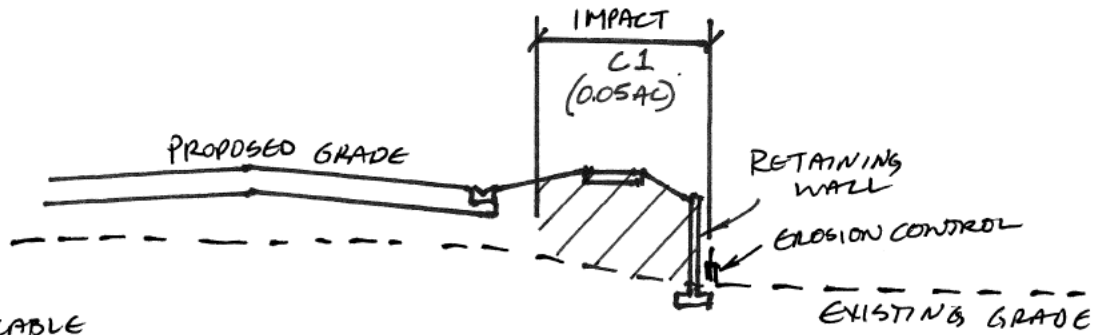
T1B



(APPLICABLE TO
IMPACTS 1A1, 1A2,
1A3, 1B1, 1B2, 1B3,
1B4, 1B5, 1B6)

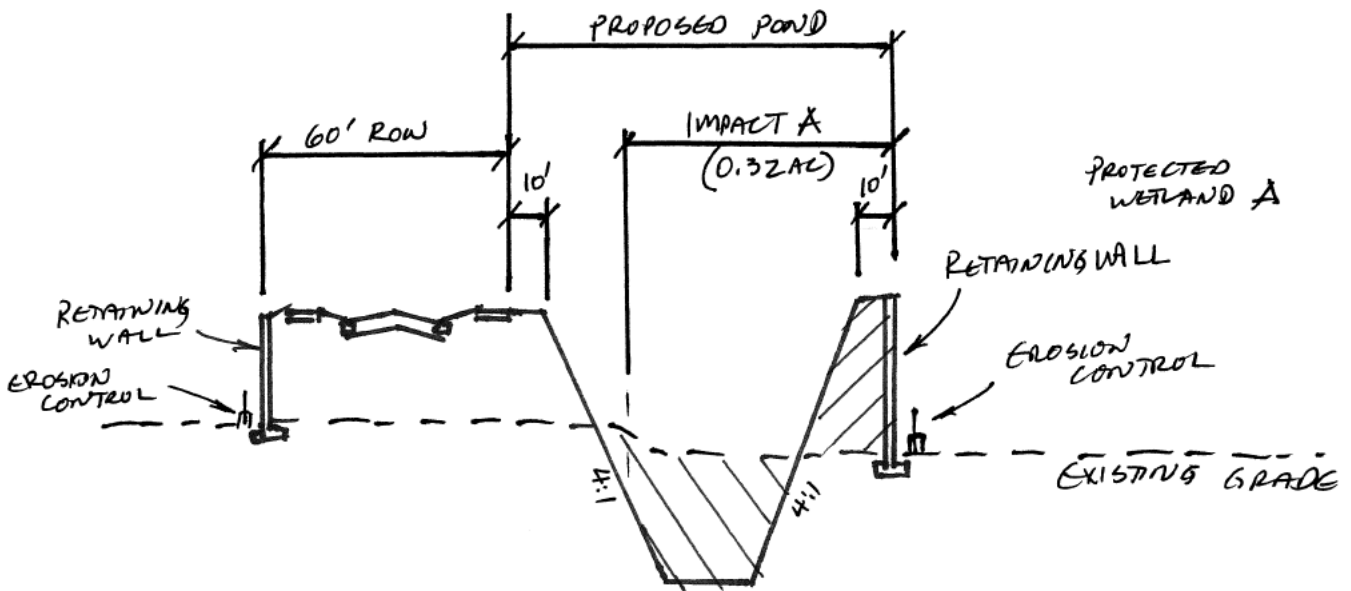
TYPICAL DITCH 1 SECTION
FOR ROAD CROSSING

T1A



(ALSO APPLICABLE
TO IMPACTS
D1 AND D2)

SECTION C1



SECTION A

